



*ExcluSive Decor*



# The Art of Gravure

NATURAL OPULENCE | MODERN TEXTURES | CLASSIC EDGE

**REPRESENTING YOUR SPACE AESTHETICS**

# D

**VOL.5**



**KS WALLCOVERINGS**

NATURAL OPULENCE

CLASSIC EDGE

MODERN TEXTURES

# DARAE



DARAE  
VOL.5



NATURAL OPULENCE

CLASSIC EDGE

MODERN TEXTURES

# REPRESENTING YOUR SPACE AESTHETICS

NATURAL OPULENCE | MODERN TEXTURES | CLASSIC EDGE



no. 1854-3



no. 1852-3



no. 1851-3



no. 1844-1



no. 1836-1



no. 1850-1



no. 1838-3



no. 1848-1



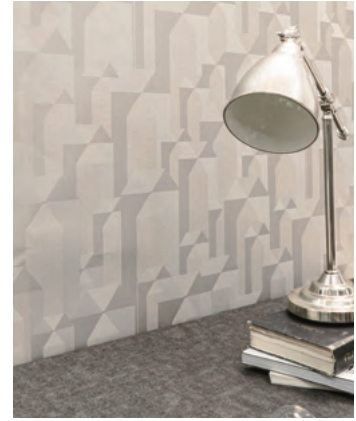
no. 1847-2



no. 1841-3



no. 1842-1



no. 1845-3



no. 1839-2



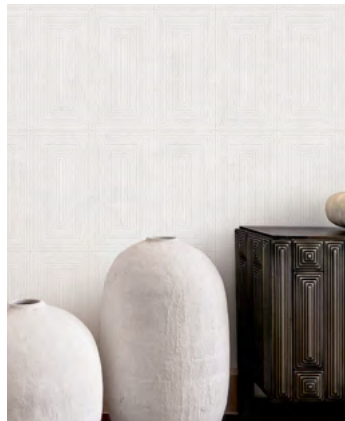
no. 1840-3



no. 1837-1



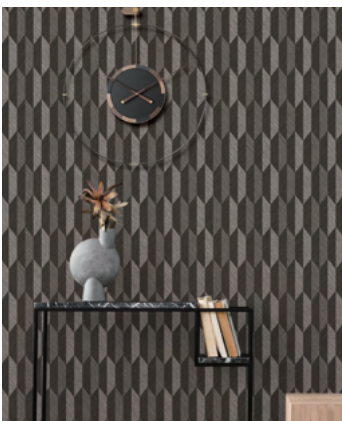
no. 1834-1



no. 1835-1



no. 1843-2



no. 1849-3

BE INSPIRED BY OUR WALLPAPERS

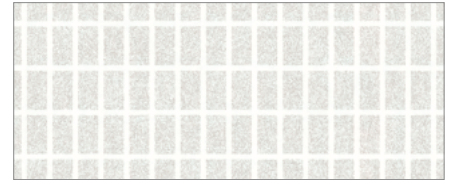
# Darae



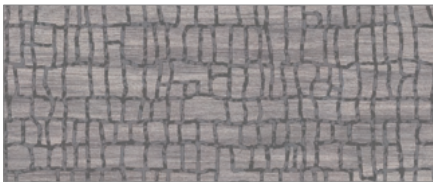
1854-1



1852-1



1850-1



1854-2



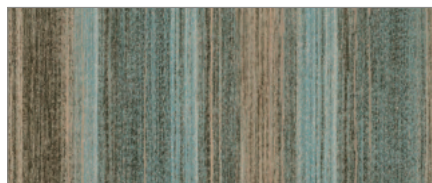
1852-2



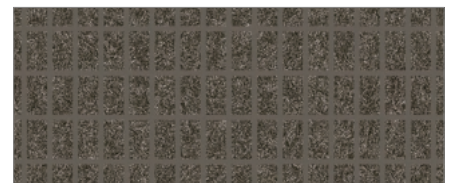
1850-2



1854-3



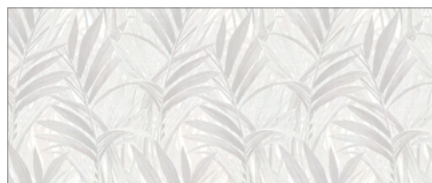
1852-3



1850-3



1853-1



1851-1



1849-1



1853-2



1851-2



1849-2



1853-3



1851-3



1849-3



1853-4



1851-4

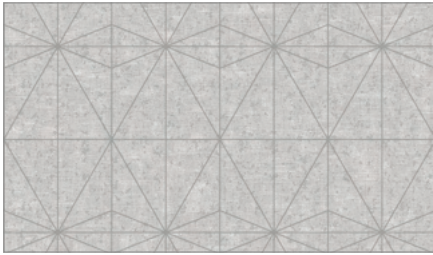


1849-4

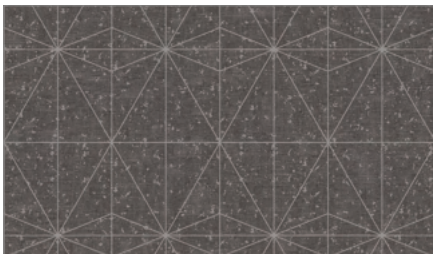




1848-1



1848-2



1848-3



1846-1



1846-2



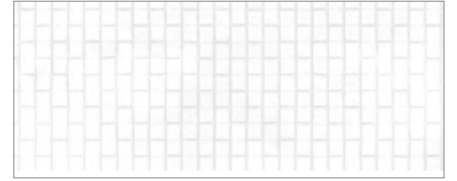
1846-3



1846-4



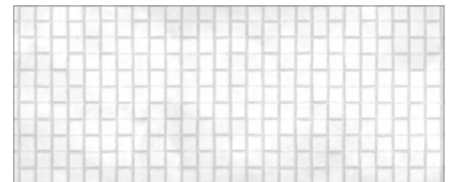
1846-5



1844-1



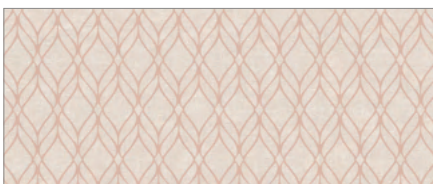
1844-2



1844-3



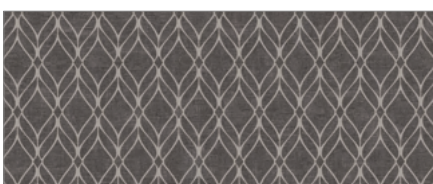
1844-4



1847-1



1847-2



1847-3



1845-1



1845-2



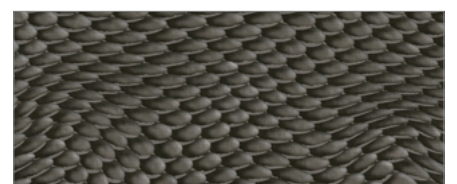
1845-3



1843-1



1843-2



1843-3



1842-1



1840-1



1838-1



1842-2



1840-2



1838-2



1842-3



1840-3



1838-3



1839-1



1837-1



1841-1



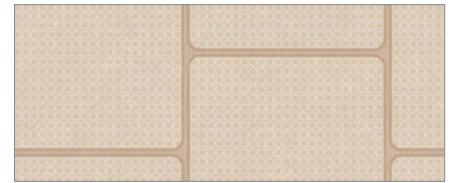
1839-2



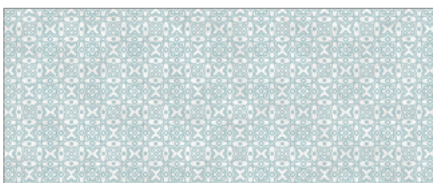
1841-2



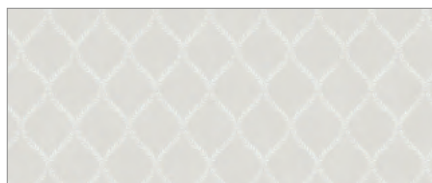
1839-3



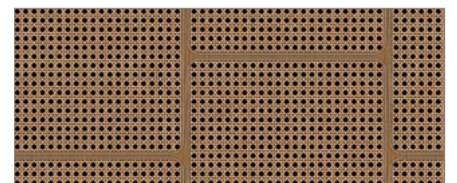
1836-1



1841-3



1839-4



1836-2



1835-1



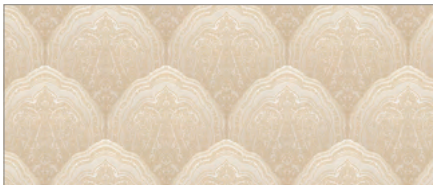
1835-2



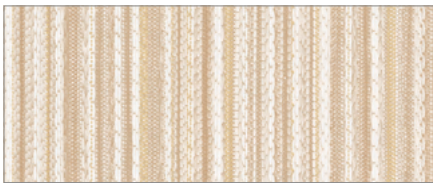
1834-1



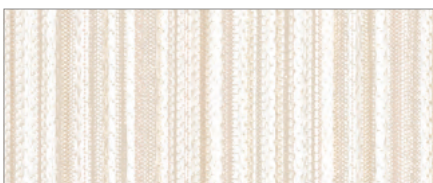
1834-2



1833-1



1832-1



1832-2



1830-1



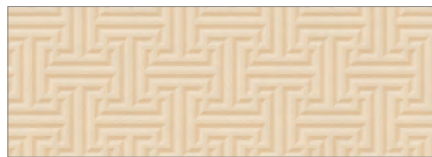
1829-1



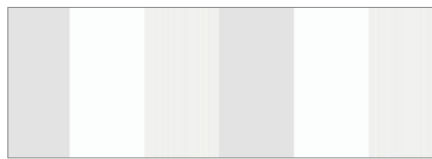
1829-2



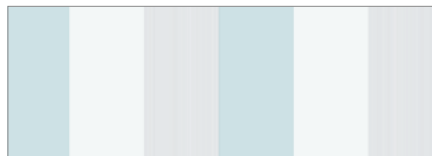
1828-2



1828-3



1827-1



1827-2



1827-4



1826-1



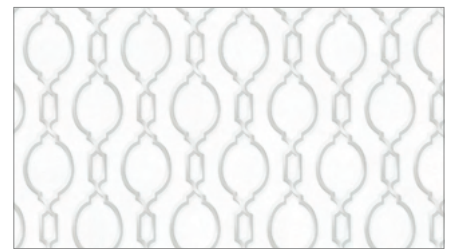
1821-1



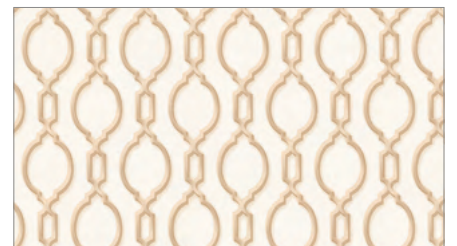
1821-2



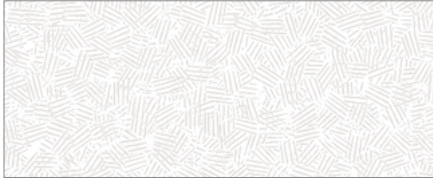
1821-3



1818-1



1818-2



1817-1



1798-1



1740-1



1817-3



1796-3



1740-2



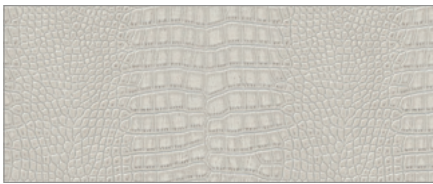
1816-1



1793-2



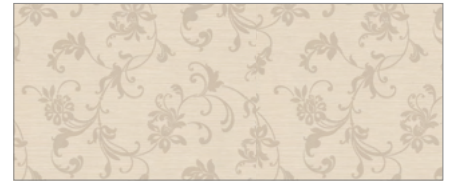
1739-1



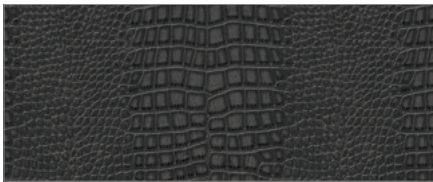
1816-4



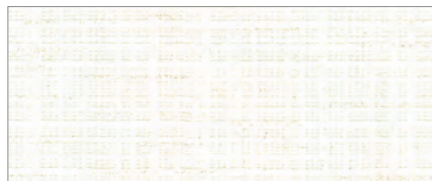
1793-3



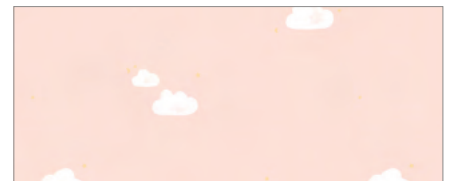
1739-2



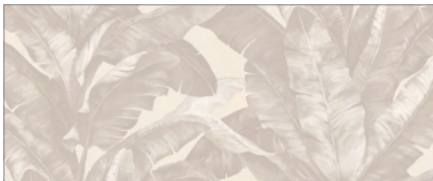
1816-5



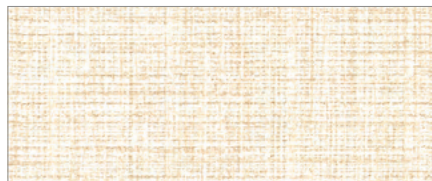
1752-1



1820-1



1815-1



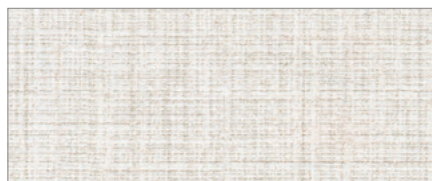
1752-2



1820-2



1799-2



1752-4

# *Timeless and lively materials*

---

## **DARAE COLLECTION**

Creating layered, lived-in spaces inspired  
by the natural world







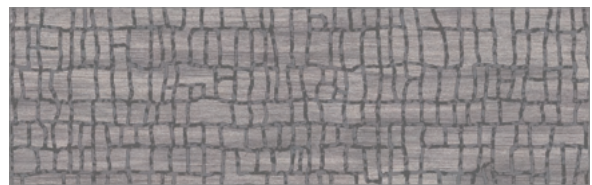
1854-3 • 1853-4

DARAE

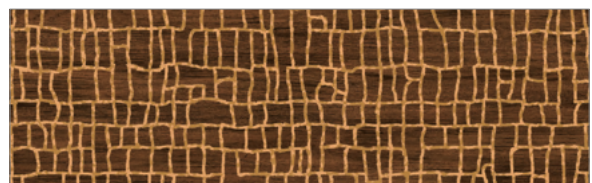
# LUXURY MODERN STYLE



1854-1



1854-2



1854-3



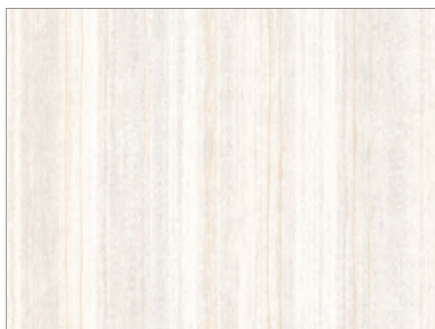


# A warm breeze full of ethnic chic

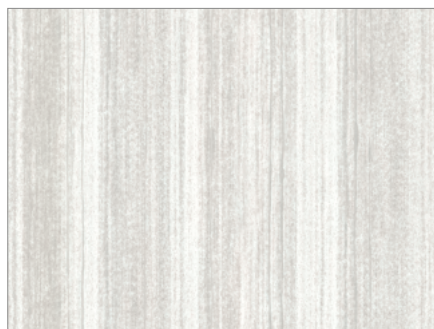
1852 series



NATURAL



1852-1



1852-2



1852-3



01

# Natural Opulence.



*botanical*  
GARDEN



1851-3



1851-1

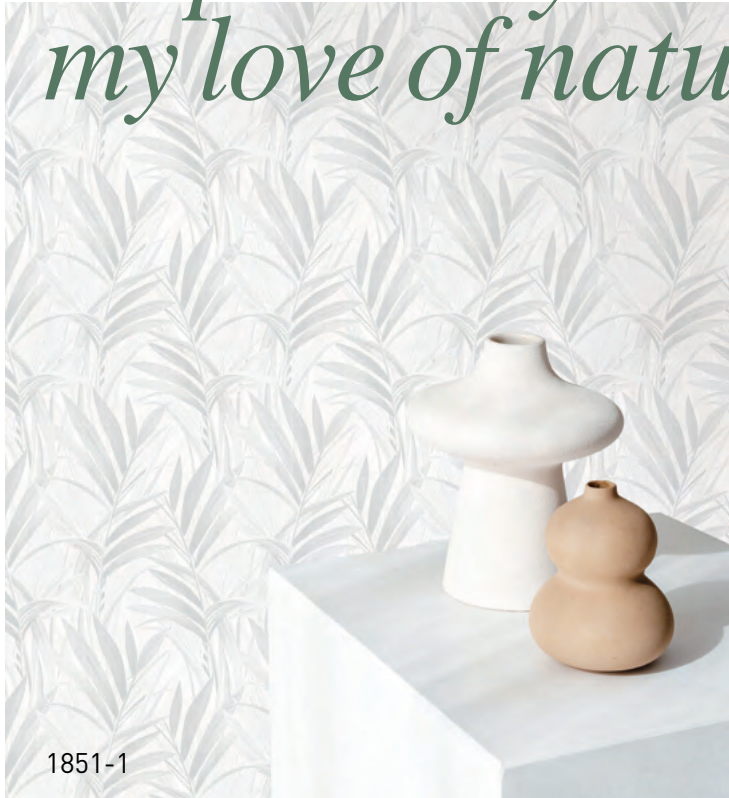


1851-2



1851-3

*Inspired by  
my love of nature*



1851-1



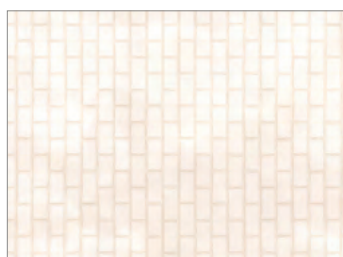
1844-3



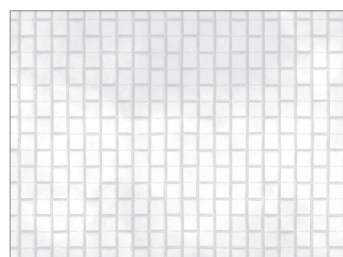
1844-4



1844-1



1844-2



1844-3

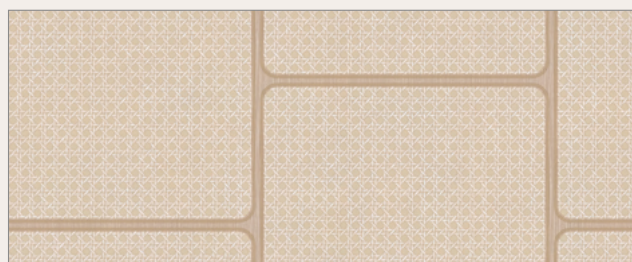


1844-4

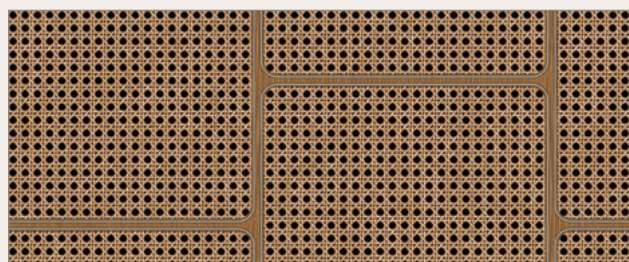


# *decorating with rattan cane*

1836-1



1836-1

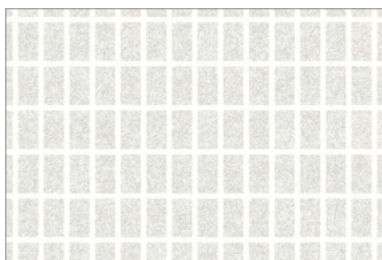


1836-2

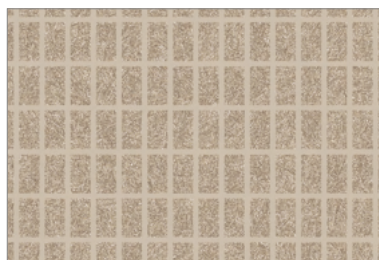
# MODERN TEXTURE

Embracing luxurious simplicity in DARAE

1850-3



1850-1



1850-2



1850-3



# Flowers blowing in the wind

1838 series



NATURAL



1838-1



1838-2



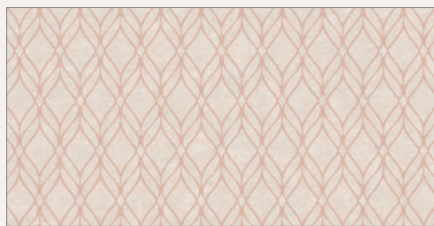
1838-3



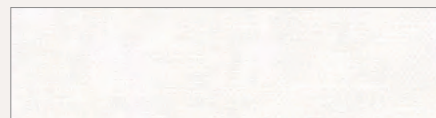
1848-1



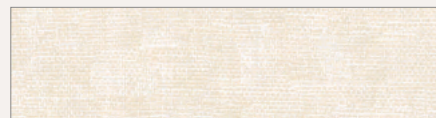
1848-1



1847-1



1846-1



1846-2



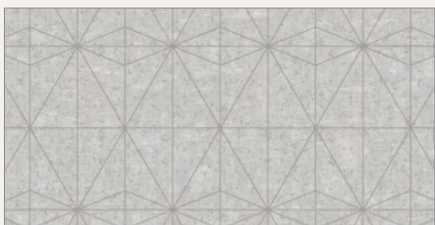
1846-3



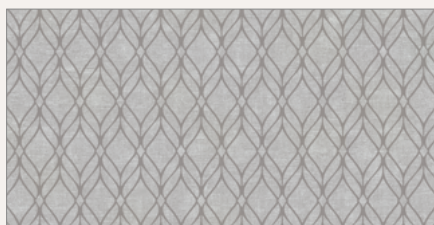
1846-4



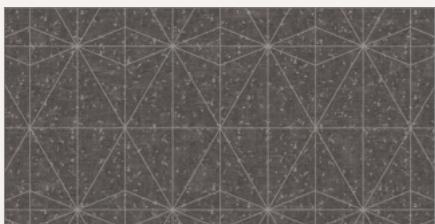
1846-5



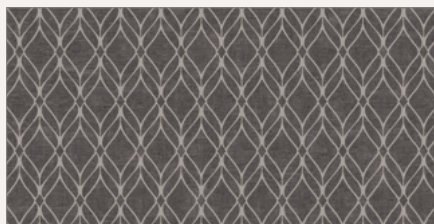
1848-2



1847-2



1848-3



1847-3

# DARAE





*Timeless, yet totally  
contemporary*

02

# Classic Edge.



*classic*  
NOBILITY



1842-3



1842-1



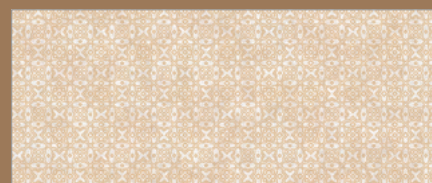
1842-2



1842-3



1841-1



1841-2



1841-3

# SHIMMER SILVER

Embracing luxurious simplicity

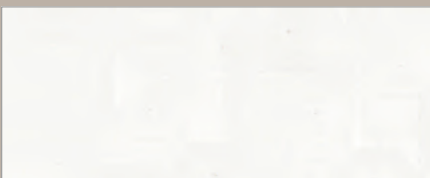
1842-1



# Luxury Modern



1845-3



1845-1



1845-2



1845-3





1839-2 • 1840-2



1840-1



1840-2



1840-3



1839-4

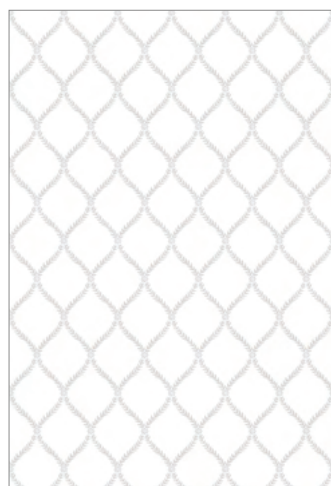


1839-2

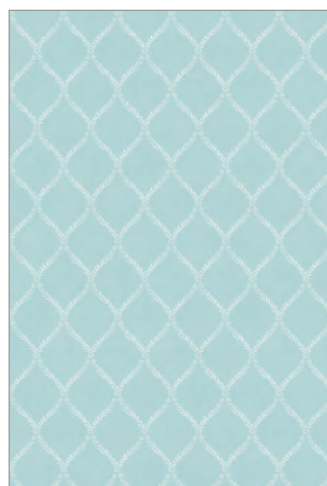
## Romantic classic



1839-1



1839-2



1839-3



1839-4



## Turquoise Classic

We suggest a stylish living space that balances classical dignity and trendy sensation for you.

1840-3



# MOLDING FLOWER



1837-1

03

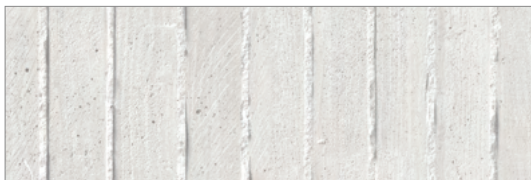
# Modern Texture.



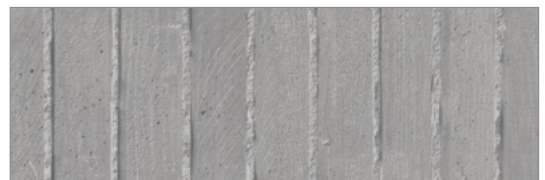
# PLASTER WALL

Design by nature and harmony that surrounds us

1834-1



1834-1

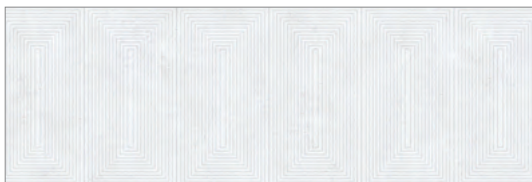


1834-2





1835-1



1835-1



1835-2



# Modern Chic



1843-2



1843-1



1843-2



1843-3

# BLACK WOOD

The beautiful interior is inspired by nature

1849-3



1849-1



1849-2



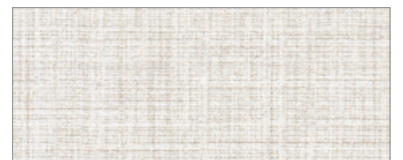
1849-3



1752-1



1752-2



1752-4

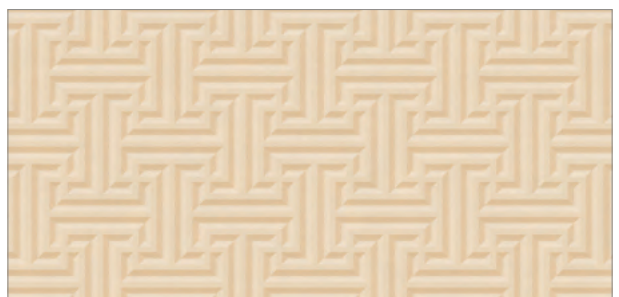


*geometric  
shimmer deco*

1828-2



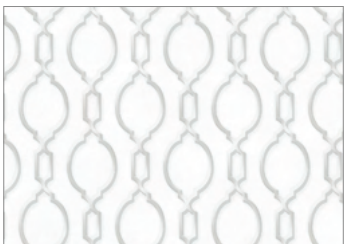
1828-2



1828-3



1817-3 • 1818-2



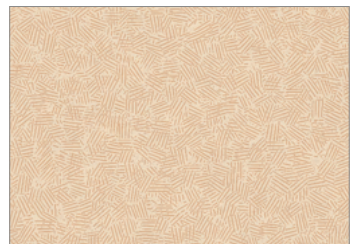
1818-1



1818-2



1817-1

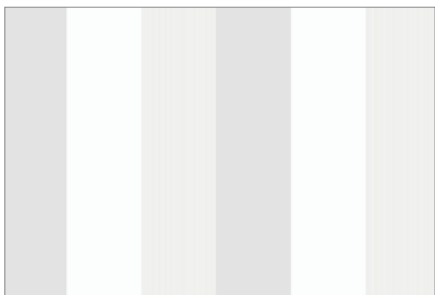


1817-3

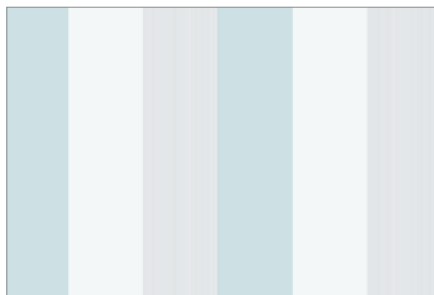
# MODERN STRIPES

Your ideal living space, now more attractive

1827-4



1827-1



1827-2



1827-4

1816-4



# Real leather

1816-1



1816-1



1816-4



1816-5



do small  
things with  
great  
love

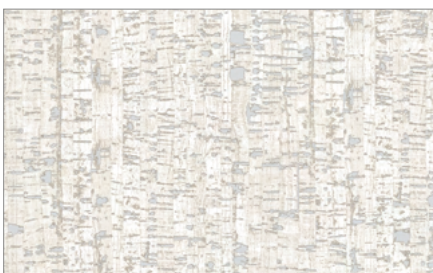
# Herring bone



1796-3



1821-1



1821-1



1821-2



1821-3



# MODERN MARBLE



1799-2



modern  
wainscoting



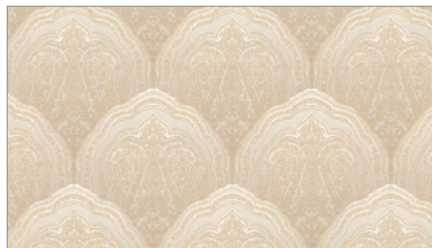
1798-1

1833-1  
1832-2



# LUXURIOUS

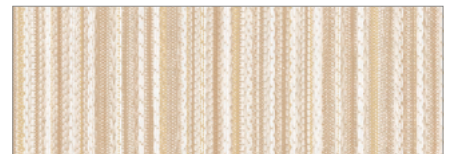
More beautiful life  
than you have ever imagined.



1833-1



1826-1



1832-1



1832-2

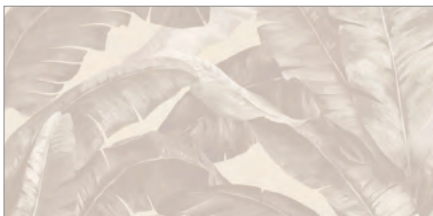


1830-1

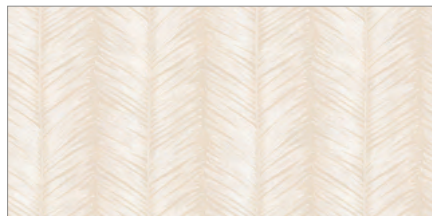
1793-2



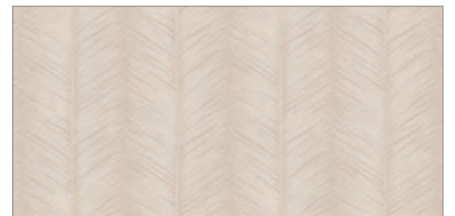
# At home with nature



1815-1



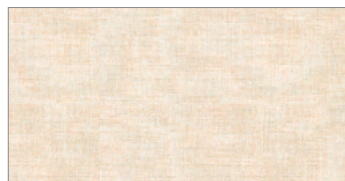
1793-2



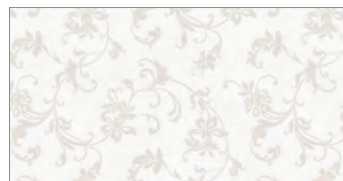
1793-3



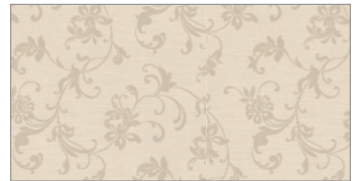
1740-1



1740-2



1739-1



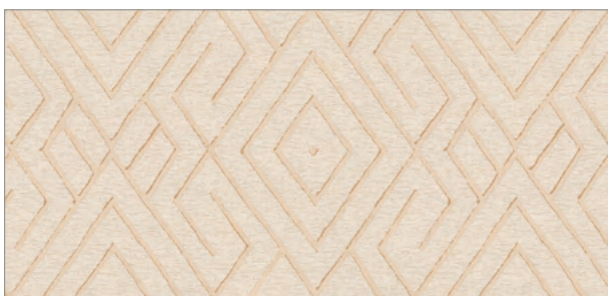
1739-2

# SHINY MODERN

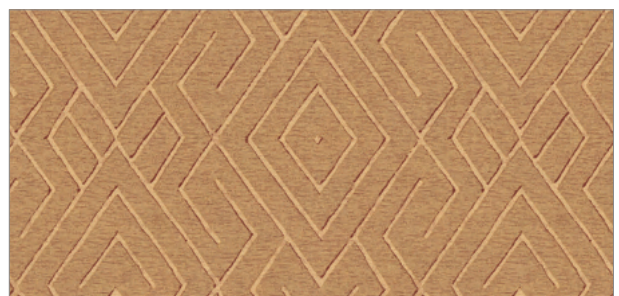
THE ART OF SIMPLE LIVING



1829-2



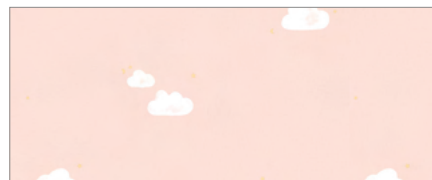
1829-1



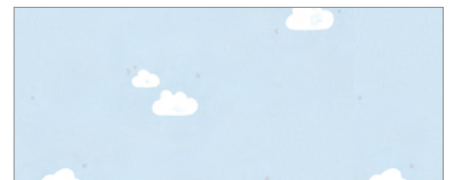
1829-2



# DESIGN FOR KIDS



1820-1



1820-2

## HANGING INSTRUCTION

### SURFACE PREPARATION

- Walls should be smooth, dust-free and dry before applying the paste, to avoid creasing.
- If the surface is not perfect, we recommend the use of a lining paper.

### CHECKING THE WALLPAPER

- Before cutting the rolls, ensure that they are all from the same lot no. and that they are in good condition with no color variation or other defects.
- For each claim, please enclose the label which indicates that lot no. After hanging 3 drops check the result. No claim is accepted for more than one roll.

### APPLICATION

- This product is hung by applying an even coating of paste either on the wall or on the reverse of the paper.
- Avoid squeezing the paste between the edges of the paper.
- The paste must not come into contact with the surface of the paper at any time.
- All traces must be removed before by lightly dabbing the surface with a moist, clean sponge.
- If paste is allowed to dry on the surface of the paper, it will cause discoloration.
- We do not accept any claim for damage resulting from paste being applied to the surface.
- Use a high-quality wallpaper paste.
- After having pasted half of one length of the paper, fold it back on itself and continued to paste the rest of the length in the same way.
- The soaking time should be very brief.
- Apply the first drop in a perfectly vertical way.
- A better ways to adhere the edges would be to paste a strip of the wall in line with the join of the paper.
- Hang the lengths, one next to the other, neatly joined together without any overlapping, taking care to match the pattern repeat
- To eliminate bubbles and to ensure a perfect contact with the wall surface, use a decorators wallpaper smoother or a dry cloth.
- Trim using a sharp blade and metal ruler.



**KS Wallcoverings**

A representative Korean Wallpaper since 1979

*We make your home unique!*



## SYMBOLS



Straight Match



Half Drop Match



Free Match



Peelable



Lightfastness



Washable



Paste to Wallpaper

**WIDTH.** 1.06m

**LENGTH.** 15.6m/Roll

**PACKING.** 4Rolls/Box



### PROJECT MANAGER

ALEX KIM

### DESIGN CENTER

Mr. MA / STELLA KIM  
CLAIRE PARK / HAILEY HEO

## CONTACT US

### MANUFACTURING PLANT

8798-50, Seodongdae-ro,  
Janghowon-eup, Icheon-si,  
Gyeonggi-do, Republic of Korea

TEL. +82-31-642-6111-9

FAX. +82-31-642-6115

### Seoul Sales Office

9F 913, 130, Digital-ro,  
Geumcheon-gu,  
Seoul, Republic of Korea

TEL. +82-2-852-1232

FAX. +82-2-869-7789

[www.ksgdw.com](http://www.ksgdw.com)

**MADE IN KOREA**

Copyright © **KS Wallcoverings**  
**All Rights Reserved.**

# INDEX

## 41 Patterns 100 Colors

No.	Page	Repeat	Match
1854	-1	1	
	-2	8	64 → ←
	-3	4,5	
1853	-1	2	
	-2	3	
	-3	7	0 → ○
	-4	6	
1852	-1	10	
	-2	11	60 → ○
	-3	9	
1851	-1	12	
	-2	18	64 → ←
	-3	15,16	
1850	-1	22	
	-2	23	4.3 → ←
	-3	24	
1849	-1	64	
	-2	66	17.3 → ←
	-3	65	
1848	-1	28	
	-2	32	52 → ←
	-3	37	
1847	-1	31	
	-2	35	52 → ←
	-3	36	
1846	-1	34	
	-2	29	
	-3	30	0 → ○
	-4	33	
	-5	38	
1845	-1	47	
	-2	48	64 → ←
	-3	46	
1844	-1	17	
	-2	19	
	-3	13	52 → ←
	-4	14	

No.	Page	Repeat	Match
1843	-1	62	
	-2	61	60 → ←
	-3	63	
1842	-1	42	
	-2	45	60 → ←
	-3	39,40	
1841	-1	43	
	-2	44	52 → ←
	-3	41	
1840	-1	50	
	-2	51	32 → ←
	-3	54	
1839	-1	49	
	-2	52	7.5 → ←
	-3	55	
	-4	53	
1838	-1	25	
	-2	26	64 → ←
	-3	27	
1837	-1	56	64 → ←
	-2	57	
1836	-1	20	
	-2	21	52 → ←
1835	-1	58	
	-2	59	52 → ←
1834	-1	57	
	-2	60	60 → ←
1833	-1	91	64 → ←
	-2	92	
1832	-1	92	
	-2	89	52 → ○
1830	-1	90	0 → ○
	-2	96	
1829	-1	96	
	-2	97	52 → ←
1828	-2	75	
	-3	70	52 → ←

No.	Page	Repeat	Match
1827	-1	77	
	-2	78	0 → ○
	-4	76	
1826	-1	88	52 → ←
	-2	83	
1821	-2	84	52 → ○
	-3	85	
1820	-1	102	
	-2	103	52 → ←
1818	-1	73	
	-2	71	52 → ←
1817	-1	74	
	-3	72	0 → ○
	-4	80	
1816	-4	79	52 → ←
	-5	81	
	-1	93	64 → ←
1815	-1	93	64 → ←
	-2	86	53 → ←
1799	-2	86	53 → ←
	-1	87	64 → ←
1798	-1	87	64 → ←
	-3	82	64 → ←
1796	-3	82	64 → ←
	-2	94	
1793	-2	94	52 → ←
	-3	95	
1752	-1	67	
	-2	68	0 → ○
	-4	69	
1740	-1	100	
	-2	101	0 → ○
1739	-1	99	
	-2	98	26 → ←

**A Representative Korean Wallpaper**  
since 1979



[www.ksgdw.com](http://www.ksgdw.com)