

# HERA



**KS WALLCOVERINGS**

I



BOLD AND  
DRAMATIC ACCENT

II



MIX OF  
METALLIC SURFACE

III



BIOPHILIC  
EXPRESSIONS

IV



VINTAGE AND  
RETRO REVIVAL

H

NEW COLLECTION

E

DESIGN WITH HERA

**HERA**  
**THE 6th EDITION**

THE ART OF STYLE

R

KSWALLCOVERINGS

A

DESIGN YOUR HOME

*The art of*  
**STYLE**

Combine the maximal and minimal  
elements of home styling

HERA The 6th Edition



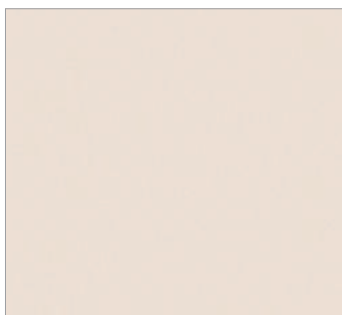
# THE PATTERN OVERVIEW



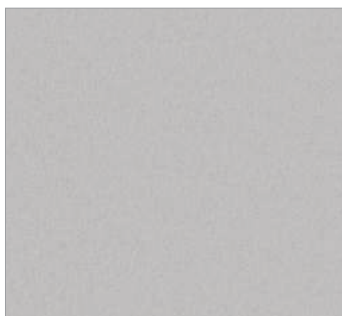
---

**23 PATTERNS**  
**80 COLORS**

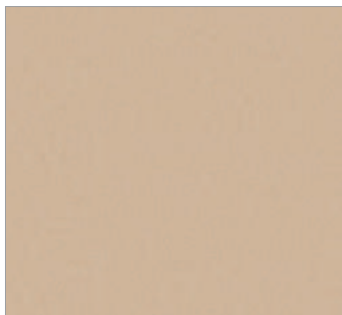
• 6099



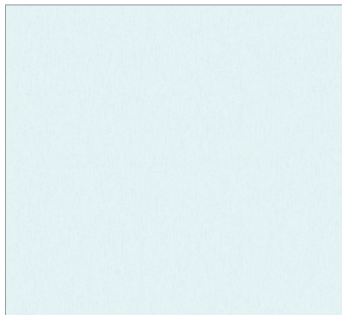
6099-1



6099-2

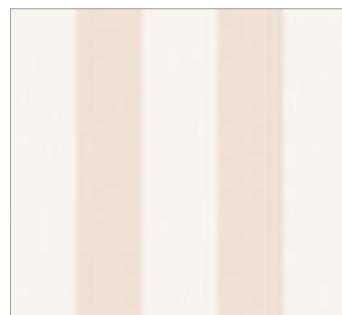


6099-3

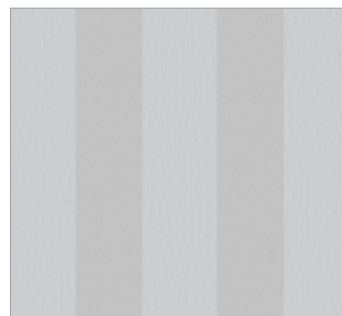


6099-4

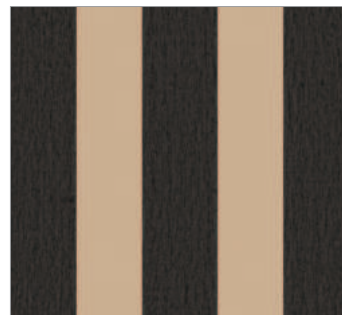
• 6098



6098-1

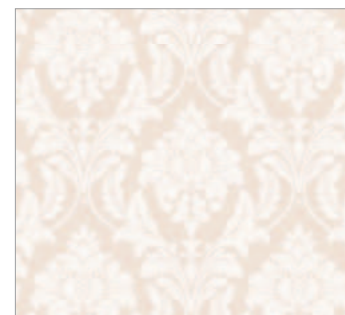


6098-2

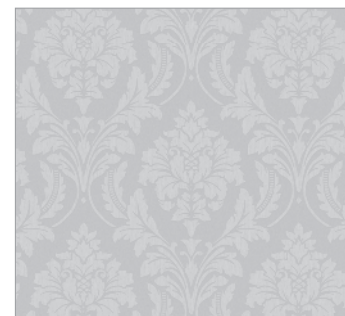


6098-3

• 6097



6097-1



6097-2

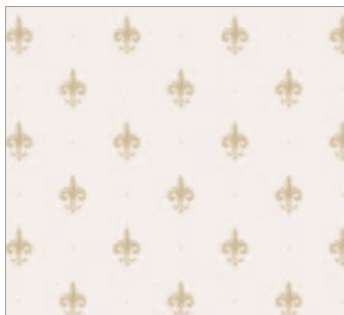


6097-3

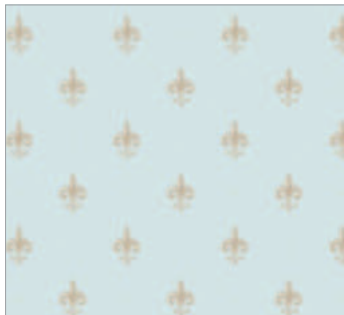
• 6101



6101-1



6101-2



6101-3

• 6100



6100-1



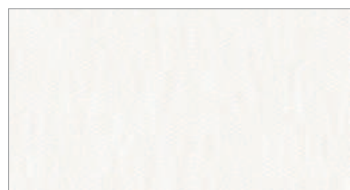
6100-2



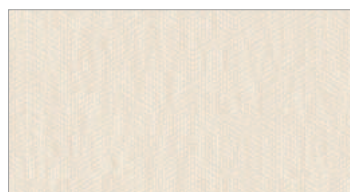
6100-3

HERA  
THE 6th EDITION

• 6096 \_\_\_\_\_



6096-1



6096-2



6096-3



6096-4

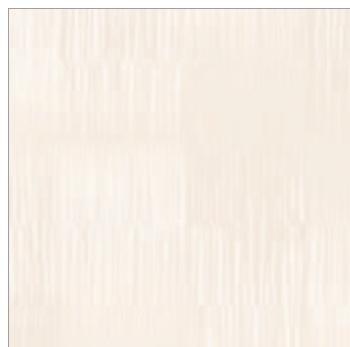


6096-5

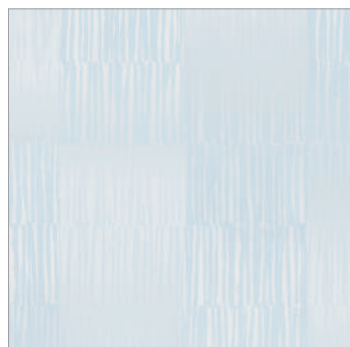


6096-6

• 6095 \_\_\_\_\_



6095-1

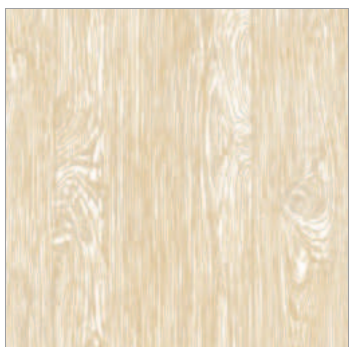


6095-2



6095-3

• 6094 \_\_\_\_\_



6094-1

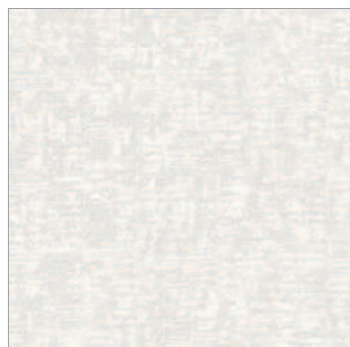


6094-2



6094-3

• 6093 \_\_\_\_\_



6093-1



6093-2



6093-3

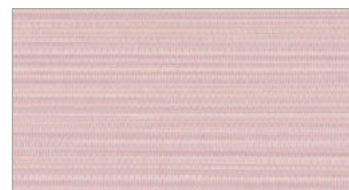
• 6092 \_\_\_\_\_



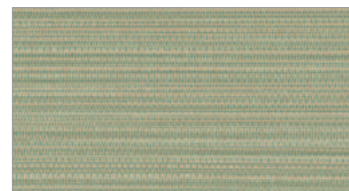
6092-1



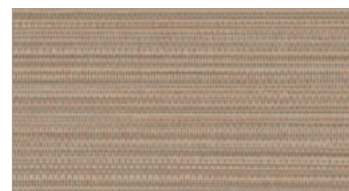
6092-2



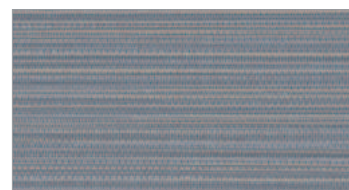
6092-3



6092-4



6092-5



6092-6

T H E A R T O F S T Y L E

• 6091 \_\_\_\_\_



6091-1

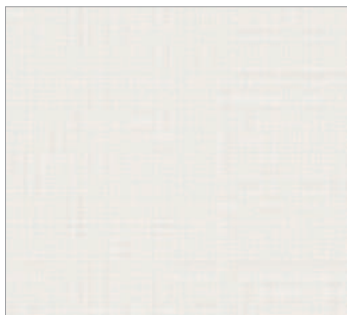


6091-2

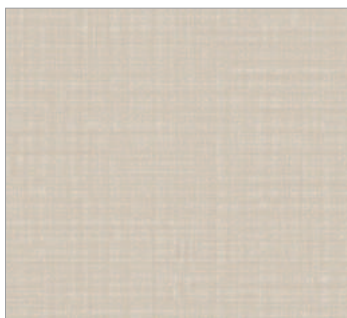


6091-3

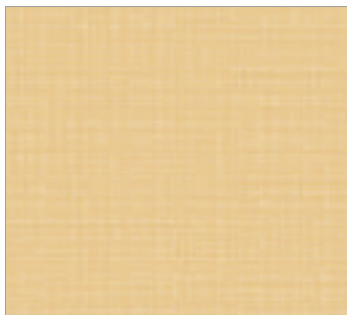
• 6090 \_\_\_\_\_



6090-1



6090-2



6090-3



6090-4

• 6089 \_\_\_\_\_



6089-1



6089-2

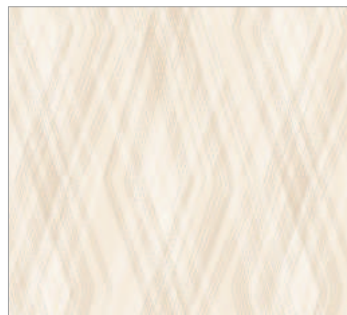


6089-3



6089-4

• 6088 \_\_\_\_\_



6088-1

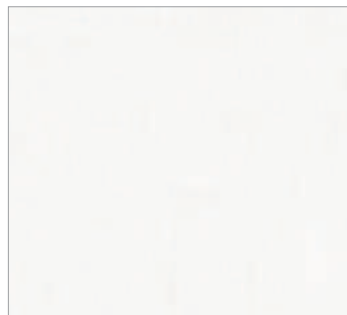


6088-2

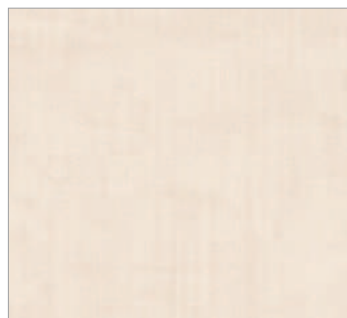


6088-3

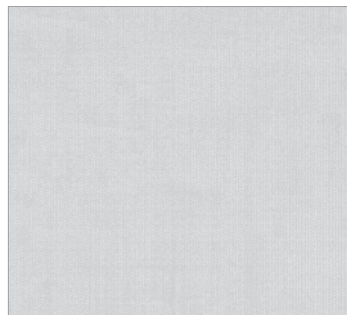
• 6087 \_\_\_\_\_



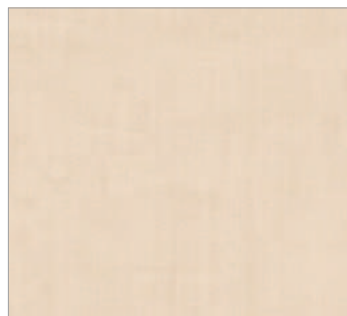
6087-1



6087-2



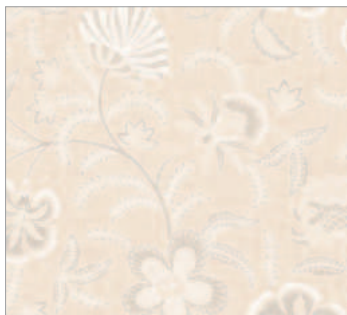
6087-3



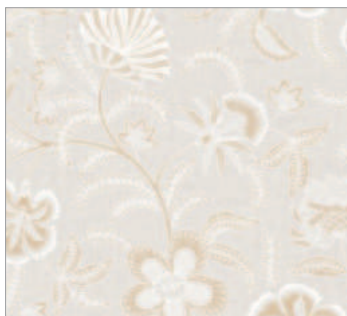
6087-4



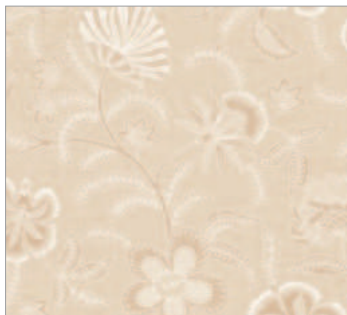
• 6086



6086-1

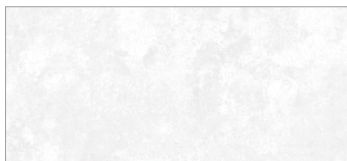


6086-2



6086-3

• 6085



6085-1

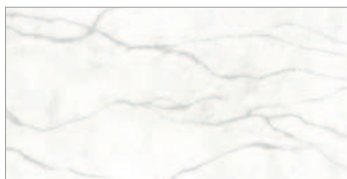


6085-2

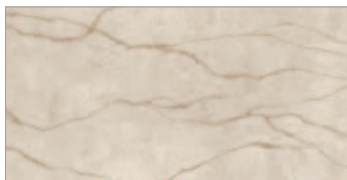


6085-3

• 6084



6084-1

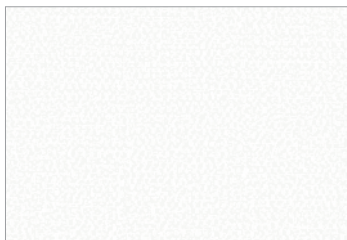


6084-2

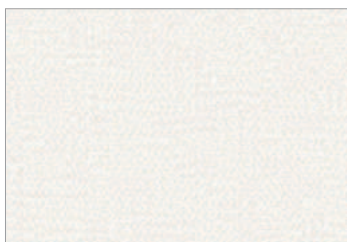


6084-3

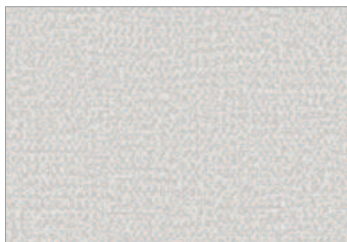
• 6083



6083-1



6083-2



6083-3

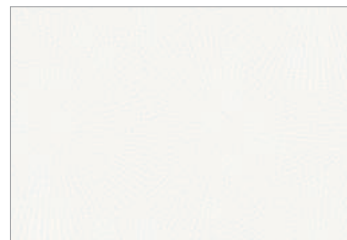


6083-4



6083-5

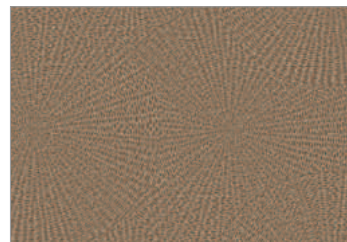
• 6082



6082-1



6082-2



6082-3

• 6077

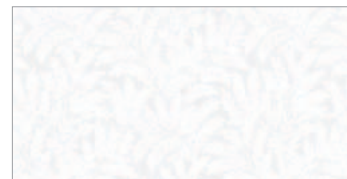


6077-1

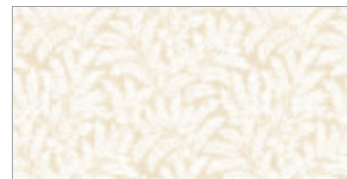


6077-2

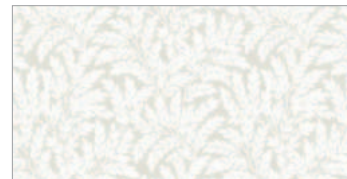
• 6074



6074-1

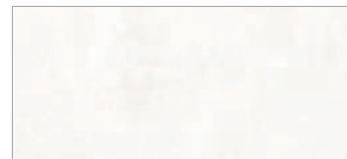


6074-2

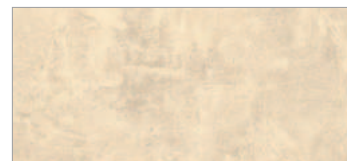


6074-3

• 6014



6014-1



6014-2



6014-7

I. THEME

# BOLD AND DRAMATIC ACCENT

No. 6082-3

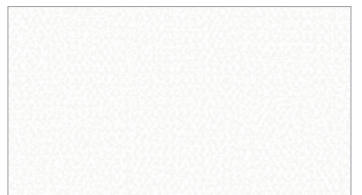


HERA – The 6th Edition

HOME IS  
WHERE  
OUR STORY  
BEGINS.

# LARGE SCALE CIRCLE

No. 6083-2 No. 6082-1



6083-1



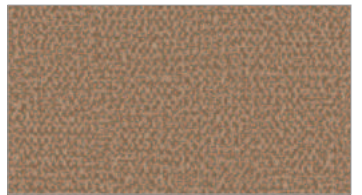
6083-2



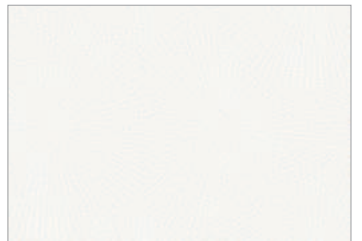
6083-3



6083-4



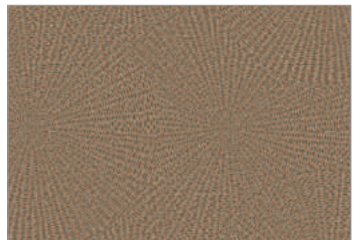
6083-5



6082-1

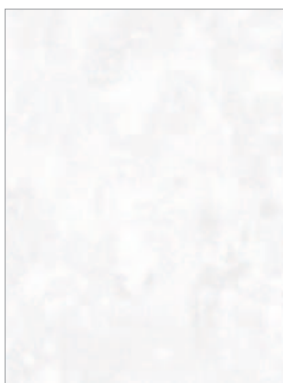


6082-2

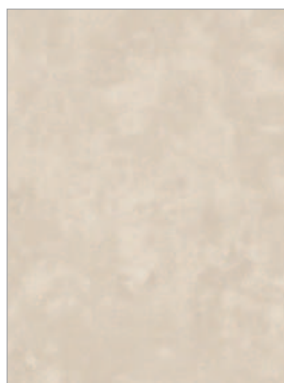


6082-3

No. 6085-3 No. 6084-2



6085-1



6085-2



6085-3



6084-1



6084-2



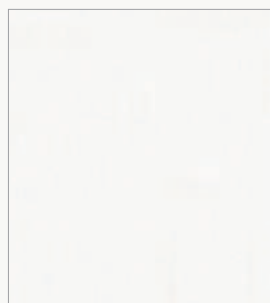
6084-3



DRAMATIC

# BOLD FLORAL

No. 6086-2 No. 6087-3



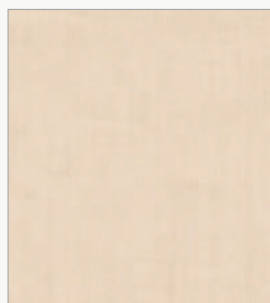
6087-1



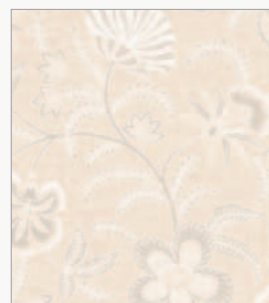
6087-2



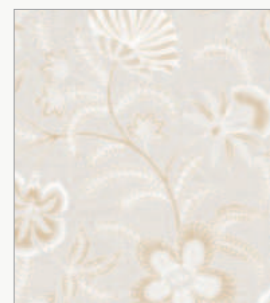
6087-3



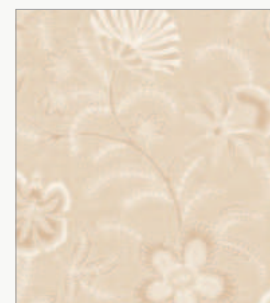
6087-4



6086-1



6086-2



6086-3

LARGE  
BLOSSOMS  
AND  
LEAVES

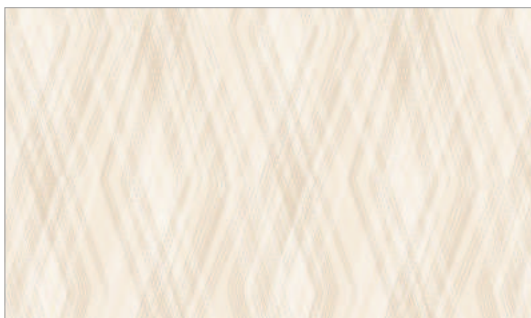
No. 6087-4 No. 6086-1





# Faux Textures

No. 6088-2



6088-1



6088-2



6088-3



*ent geometric wallpaper  
modern yet timeless look.*



MIX OF  
METALLIC SURFACE

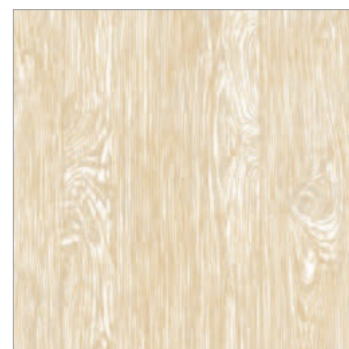
METALLIC ADD  
UNEXPECTED FLAIR



No. 6094-1

HERA

# GRAIN of WOOD



6094-1

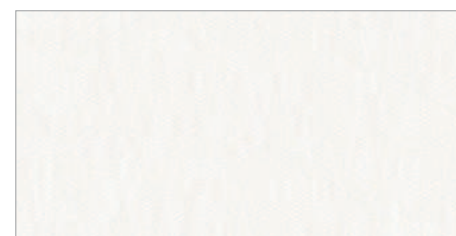


6094-2



6094-3

No. 6096-2



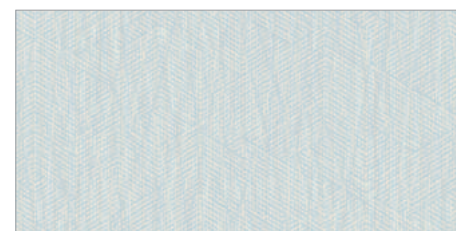
6096-1



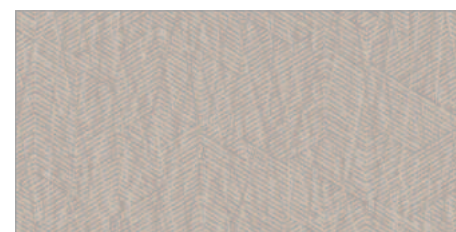
6096-2



6096-3



6096-4



6096-5



6096-6

No. 6096-3



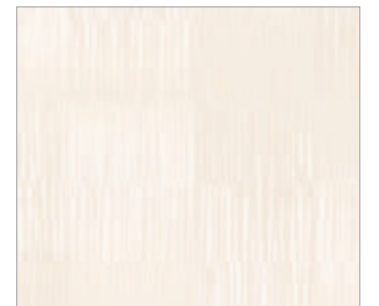
No. 6094-2



## SHIMMERING SILVER

*The shimmering surface of these wallcoverings adds a glamorous and reflective element to any room, catching and enhancing natural light.*

No. 6095-2



6095-1



6095-2

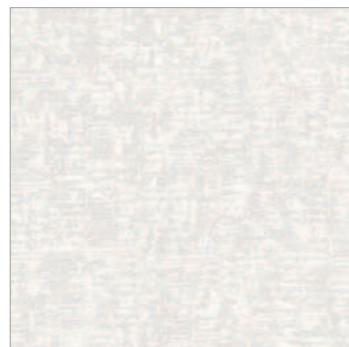


6095-3



No. 6093-2

HERA  
THE 6th EDITION



6093-1



6093-2



6093-3



SUBTLE  
METALLIC  
ADD  
UNEXPECTED  
FLAIR



No. 6096-5

No. 6096-1



No. 6077-2 No. 6077-1

# MARBLE SHINY



6077-1



6077-2



# III. THEME

# BIOPHILIC EXPRESSIONS

No. 6090-1

No. 6089-3



6090-1



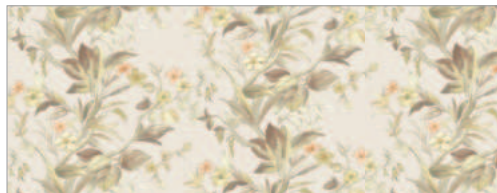
6090-2



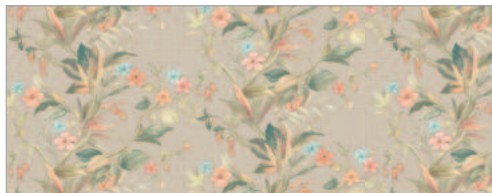
6090-3



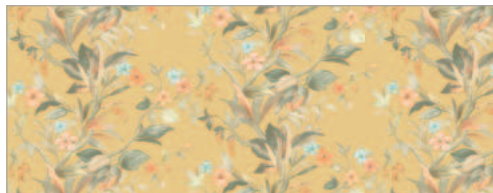
6090-4



6089-1



6089-2



6089-3



6089-4

HERA – The 6th Edition

# NATURAL

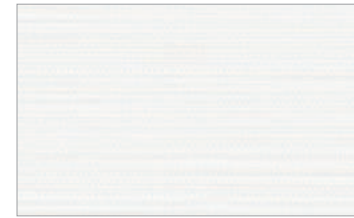
*calming natural*

The inviting ambiance of meticulously  
crafted botanical wallpapers.

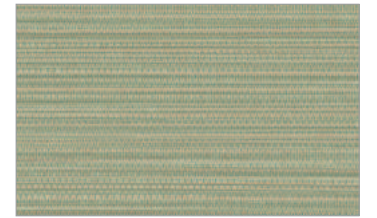
\* No. 6092

No. 6091-1 No. 6092-4

Please, do not match the pattern to get the best installation result.



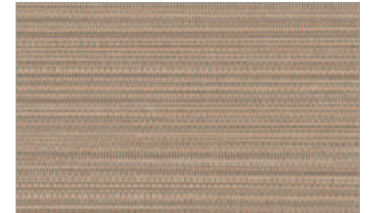
6092-1



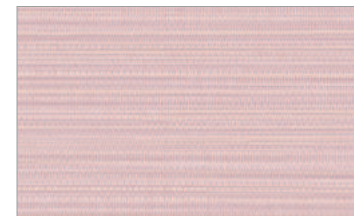
6092-4



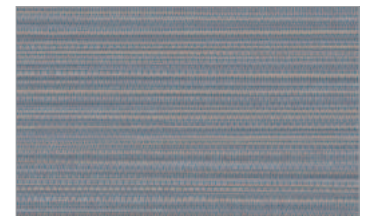
6092-2



6092-5



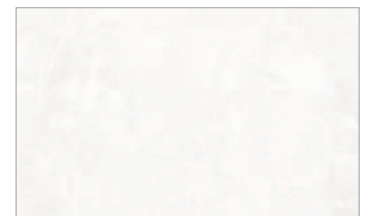
6092-3



6092-6



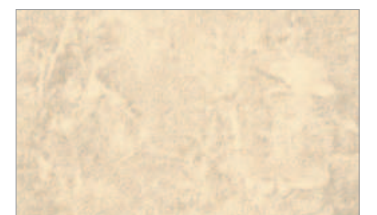
6091-1



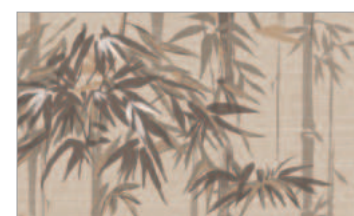
6014-1



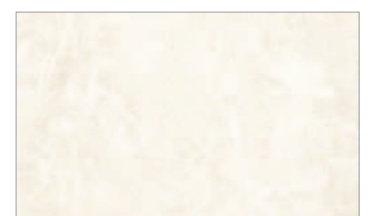
6091-2



6014-2



6091-3



6014-7



Reception

No. 6091-3

\* Please, do not match the pattern to get the best installation result.



# GRASS CLOTH

NO.6092 SERIES

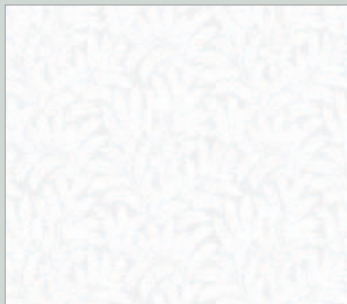




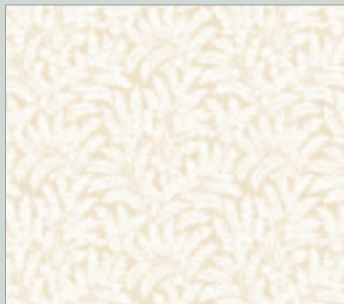


# LEAFY VINES

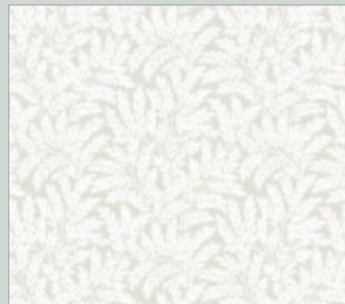
No. **6074-1**



6074-1



6074-2



6074-3

No. 6074-3

BRING  
THE CHARM  
OF  
A GARDEN



THEME  
**IV**

# VINTAGE & RETRO REVIVAL



No. **6099-1**

No. **6100-3**

No. **6099-4**



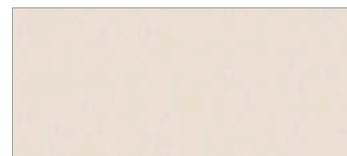
6100-1



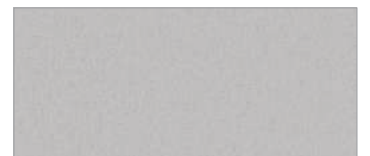
6100-2



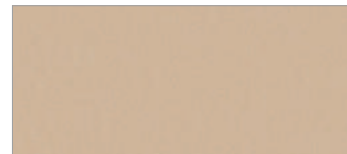
6100-3



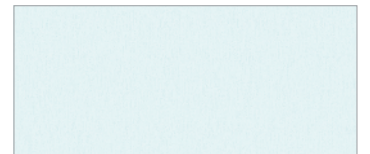
6099-1



6099-2



6099-3



6099-4



MODERN DAMASK No. 6100-3

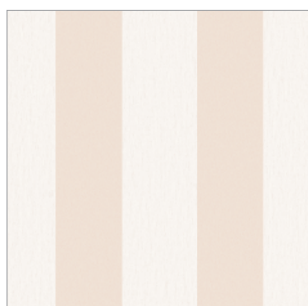


*This Damask & stripe wallpaer will  
add a stylish finishing touch to your home*



# DAMASK AND STRIPE

No. 6098-3 No. 6097-3



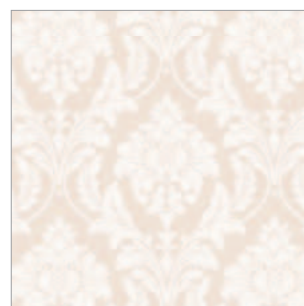
6098-1



6098-2



6098-3



6097-1



6097-2



6097-3



No. 6097-1

No. 6098-1

# FLEUR DE LIS



6101-1



6101-2



6101-3



No. 6101-1



No. 6101-2





## HANGING INSTRUCTION

### SURFACE PREPARATION

- Walls should be smooth, dust-free and dry before applying the paste, to avoid creasing.
- If the surface is not perfect, we recommend the use of a lining paper.

### CHECKING THE WALLPAPER

- Before cutting the rolls, ensure that they are all from the same lot no. and that they are in good condition with no color variation or other defects.
- For each claim, please enclose the label which indicates that lot no. After hanging 3 drops check the result. No claim is accepted for more than one roll.

### APPLICATION

- This product is hung by applying an even coating of paste either on the wall or on the reverse of the paper.
- Avoid squeezing the paste between the edges of the paper.
- The paste must not come into contact with the surface of the paper at any time.
- All traces must be removed before by lightly dabbing the surface with a moist, clean sponge.
- If paste is allowed to dry on the surface of the paper, it will cause discoloration.
- We do not accept any claim for damage resulting from paste being applied to the surface.
- Use a high-quality wallpaper paste.
- After having pasted half of one length of the paper, fold it back on itself and continued to paste the rest of the length in the same way.
- The soaking time should be very brief.
- Apply the first drop in a perfectly vertical way,
- A better ways to adhere the edges would be to paste a strip of the wall in line with the join of the paper.
- Hang the lengths, one next to the other, neatly joined together without any overlapping, taking care to match the pattern repeat
- To eliminate bubbles and to ensure a perfect contact with the wall surface, use a decorators wallpaper smoother or a dry cloth.
- Trim using a sharp blade and metal ruler.



**KS Wallcoverings**

A representative Korean Wallpaper since 1979


*We make your home unique!*

## SYMBOLS

→|← Straight Match


→|← Half Drop Match

→|○ Free Match

 Peelable

 Lightfastness

 Washable

 Paste to Wallpaper

**WIDTH.** 1.06m

**LENGTH.** 15.6m/Roll

**PACKING.** 4Rolls/Box



**PROJECT MANAGER**  
ALEX KIM

## CONTACT US

### MANUFACTURING PLANT

8798-50, Seodongdae-ro,  
Janghowon-eup, Icheon-si, Gyeonggi-do,  
Republic of Korea

TEL. +82-31-642-6111-9

FAX. +82-31-642-6115

### Seoul Sales Office

21, Dongmak-ro 6-gil, Mapo-gu,  
Seoul, Republic of Korea

TEL. +82-2-852-1232

FAX. +82-2-334-1646

[www.ksgdw.com](http://www.ksgdw.com)

## MADE IN KOREA

Copyright © KS Wallcoverings  
All Rights Reserved.

## INDEX

23 Patterns 80 Colors

No.	Page	Repeat	Match
	-1	81	
6101	-2	82	13 → ←
	-3	83	
	-1	70	
6100	-2	71	70 → ←
	-3	68	
	-1	80	
6099	-2	77	0 → ○
	-3	72	
	-4	69	
	-1	79	
6098	-2	76	0 → ○
	-3	74	
	-1	78	
6097	-2	75	30 → ←
	-3	73	
	-1	27	
	-2	28	
6096	-3	31	0 → ○
	-4	32	
	-5	38	
	-6	35	
	-1	26	
6095	-2	30	52 → ←
	-3	37	
	-1	25	
6094	-2	33	52 → ←
	-3	36	

No.	Page	Repeat	Match
	-1	29	
6093	-2	34	52 → ←
	-3	39	
	-1	59	
	-2	62	
6092	-3	55,60	0 → ○
	-4	51,63	
	-5	58,61	
	-6	64	
	-1	50	
6091	-2	53	60 → ←
	-3	56	
	-1	47	
6090	-2	49	0 → ○
	-3	43	
	-4	44	
	-1	46	
6089	-2	48	30 → ←
	-3	42	
	-4	45	
	-1	23	
6088	-2	22	60 → ←
	-3	24	
	-1	15	
6087	-2	19	0 → ○
	-3	16	
	-4	21	

No.	Page	Repeat	Match
	-1	18	
6086	-2	17	53 → ←
	-3	20	
	-1	12	
6085	-2	10	52 → ←
	-3	13	
	-1	11	
6084	-2	9	60 → ←
	-3	14	
	-1	5	
	-2	6	
6083	-3	8	0 → ○
	-4	2	
	-5	3	
	-1	4	
6082	-2	7	60 → ←
	-3	1	
	-1	40	
6077	-2	41	60 → ←
	-1	65	
6074	-2	67	17.3 → ←
	-3	66	
	-1	52	
6014	-2	57	0 → ○
	-7	54	

**A Representative Korean Wallpaper**

since 1979



[www.ksgdw.com](http://www.ksgdw.com)